



# NORTHERN MARIANAS COLLEGE

## **COVID-19 PROTOCOLS**

### **PHASED APPROACH**

NMC will continue to work closely with public health officials and government leadership to ensure a safe campus environment on all three islands. College leadership maintains the right to pause or move back in the implementation of this phase approach based on community health conditions.

### **CURRENT PHASE: SAILING AHEAD**

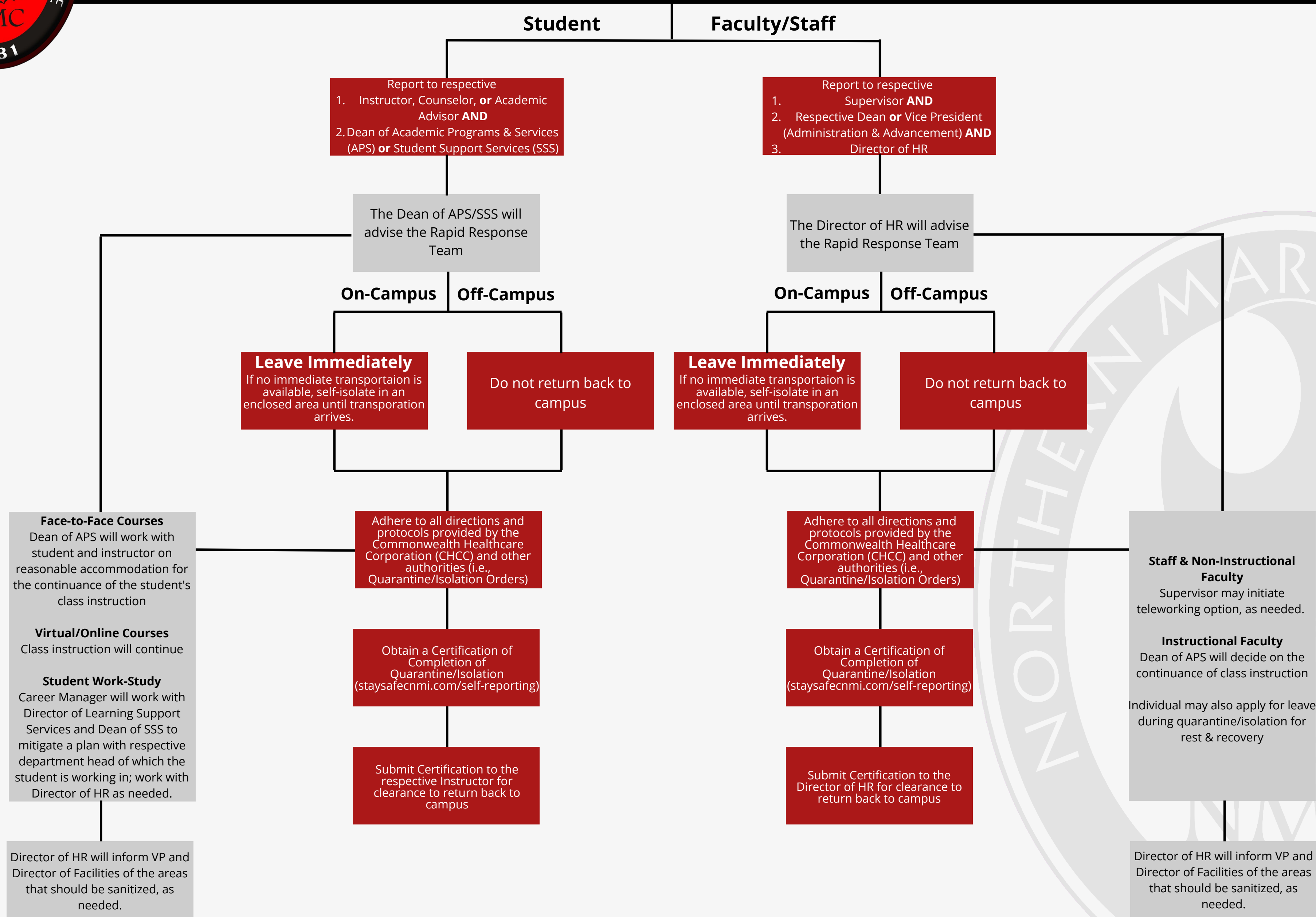
This means both the CNMI and NMC have a vaccination rate above 95%. The College will not shift to an in-person operational status with health and safety guidelines in place. The College will **now** shift to **in-person operation status** with health and safety guidelines in place.

- All employees and students are **required to wear a facial covering on campus**.
- All employees and face-to-face students **must be fully vaccinated** or have an approved medical or religious exemption.
- Faculty and staff **support in-person operations**. College leadership will continue to maintain flexibility in determining the split between remote (teleworking) and in-person work.
- Employees and students should **stay home** if they are sick or test positive for COVID-19. Employees and students who are sick or test positive should complete a daily symptom check as prescribed by the Commonwealth Healthcare Corporation (CHCC) and the Governor's COVID-19 Task Force.
- Employees should report for in-person work, unless approved by their direct supervisor to telework from home.
- On campus, indoor instruction resumes at **75% capacity**.
- College leadership retains flexibility to adapt its operations as community health conditions require.



# NORTHERN MARIANAS COLLEGE *COVID-19 FLOWCHART*

**Individual tests  
COVID-19 Positive (+)**





# NORTHERN MARIANAS COLLEGE *COVID-19 FLOWCHART*

**Individual was in direct contact/exposed to someone who tested COVID-19 Positive (+)**

